

NZCFS EXPLORE CHINA: The North-East

May 28 - June 19, 2014 21 Days in China

This compact tour is designed to better explore one region and reduce the requirement for long distance travel. It includes cities modern and old, sites of historical significance and international influences, breathtaking scenic wonderlands, local cultures and cuisine.

A new area for NZCFS tours, this will be a time of discovery and of understanding the relationship of the North East to China's history and economy. It's a region of extreme climate, with many Russian, Korean and Japanese influences, including Japanese domination in the 'Manchuguo' period, all having an important social impact on China today.

The tour plans to visit the following locations, see over for detail.



- Heilongjiang Province
 - Harbin, Siberian Tigers
- Jilin Province
 - Changchun: Puyi residence
 - Jilin City
 - Changbai Shan
- Liaoning Province
 - Shenyang
 - Dandong, border with North Korea, where the godwits fly
 - Dalian
- Shandong Province
 - Yantai
 - Jinan
 - Mt Tai, Qufu
- Shanghai, modern and old

Fully escorted, 3-star twin share accommodation. All inclusive price \$6950 (estimated, subject to currency exchange), includes domestic flights in NZ, all meals, etc, (excludes Chinese visa and insurances).



For expression of interest and enquiry, contact Ann White
 tangible@farmside.co.nz
 03 614 8944



www.nzchinasociety.org.nz

NZCFS EXPLORE CHINA: The North-East

May 28 - June 19 2014

May 28 Depart NZ 11.15 pm

Day 1 Arrive Shanghai, transfer to Jinan, Shandong, travel to base of Taishan (2 hours), stay in **Tai'an**.

Day 2 Dai Taoism Temple; Buyang folk art village, cable car up Taishan Mountain - UNESCO cultural and natural heritage site. Stay on **Taishan Mountain**.



Day 3 Sunrise on the mountain; visit Qufu, hometown of Confucius: temple, former residence, tomb; another 2 hours back to **Jinan**.

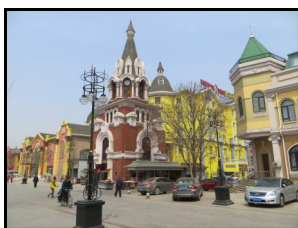
Day 4 Daming Lake, the biggest spring lake in China; Furong Street:

the old commercial street, famous for varieties of local snacks; Baotuquan Springs Park, the symbol of **Jinan**.

Day 5 Drive to Penglai, visit Penglai Pavilion: one of the 4 old pavilions in China. It's said emperors like Qinshihuang came here for immortal pills. **Penglai**.

Day 6 Drive to Yantai; Yantaishan park, symbol of Yantai, three sides by the sea; Changyu wine-making factory, coastal scenery, **overnight ferry to Dalian**.

Day 7 Olympic Square, Lushun naval port; 203 Highland: the former Japanese and Russian war site; film base, Hudiao Square, **Dalian**.

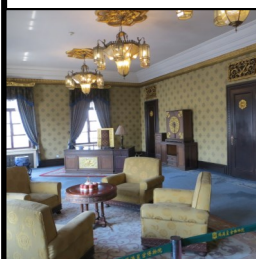


Day 8 City squares with different styles; Baochui Island; Snake Museum, Russian Street; Japanese Street, **Dalian**.

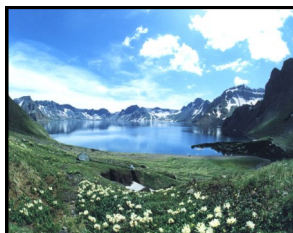
Day 9 Bus to Dandong; Hushan Great Wall, the east end of Ming Wall; Yalujiang Bridge, the oldest one on the river, but now broken; Memorial Hall of the War to Resist US aggression and Aid Korea, **Dandong**.

Day 10 Yalujiang National Nature Reserve, where the godwits fly. Take train to **Shenyang**.

Day 11 Shenyang Palace; Japanese War Museum; walking street; local performance night show, **Shenyang**.



Day 12 Fast train to Changchun, Puyi's palace and administrative offices; Sculpture Park, and cultural square, **Changchun**.



Day 13 Jilin North Mountain Park: natural scenery with temples; boat trip to Golden Turtle Island and Five Tigers Island in Songhua Lake, **Jilin City**.

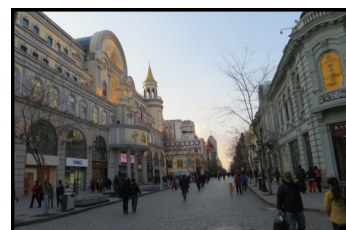
Day 14 Train to Dunhua; another 2.5 hours bus to **Erdao**, Korean performance.

Day 15 Changbaishan (north part), mainly for mountain lake and waterfall. **Erdao**.

Day 16 Changbaishan (west part), mainly for flowers, valley, hot springs and boundary monument of China and DPRK, **Erdao**.

Day 17 Bus to Yanji; sika deer spot, Korean cultural village, **overnight soft sleeper train** to Harbin.

Day 18 Sun Island scenic spot by the Songhua River, famous for the ice and snow exhibition hall; Siberian tiger park; Science and Technology Museum, **Harbin**.



Day 19 Dragon Tower: the highest Asian steel tower; up to the tower for the dinosaur museum; Sofia Church Square: the largest Orthodox Eastern Church in the Far East; Flood Control Monument; Stalin Park; after dinner, the central street: the most prosperous commercial street in NE China. **Harbin**.



Day 20 Fly to Shanghai, relax, in the evening, enjoy an acrobatic performance. **Shanghai**.

Day 21 City sights,

which may include the Shanghai Museum, the City Planning Display Centre, the Bund, Yu Garden, Jade Buddha Temple and Xintiandi, to be arranged. Or enjoy a free day shopping. **Shanghai**.

Day 22 Mid-morning go to airport, depart 2.15pm for New Zealand.

Contact Ann White
tangible@farmside.co.nz
 or call 03 614 8944